



# **District-Wide Commitment to Classroom Physical Activity and School Movement Labs: The Alief Independent School District Story**

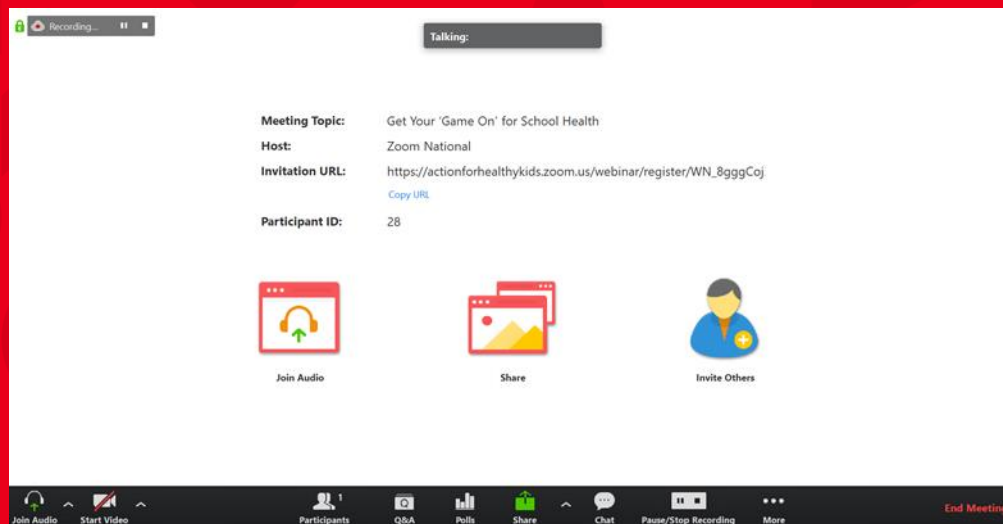
**Kelley Sullivan  
Courtney Grass  
Cheryl Williams  
Leslie DeRuiter**

**Thursday, February 6  
12pm PT / 1pm MT / 2pm CT / 3pm ET**

**Active Classrooms Webinar Series  
December 2019 – February 2020**

# Welcome!

- Listen in with your telephone or computer speakers
- Everyone is muted
- Submit questions in the question box
- This call is being recorded
- Follow-up email with links to webinar evaluation, recording, handouts, and participation certificate will be sent out in the coming days



# Agenda

- Active Schools Overview
- Guest Speakers: Kelley Sullivan, Courtney Grass, Cheryl Williams, Leslie DeRuiter
- Q&A



# Our Mission

At Active Schools, we believe every kid has a right to at least 60 minutes of physical activity before, during, and after school each day – and every school has the responsibility to provide it.

Our goal is to make it easier for schools to provide an active school environment.

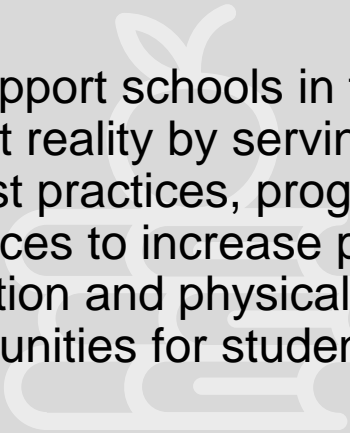


# A Vision That Kids Deserve

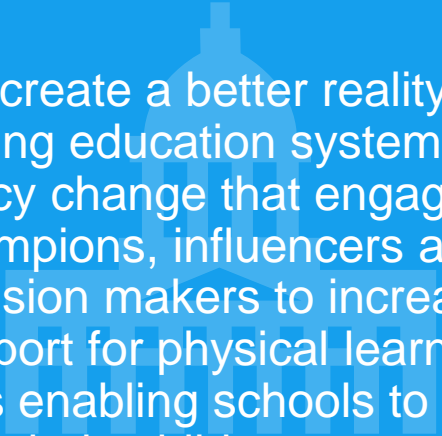
Reimagine school environments to provide opportunities for academic, social-emotional *and* physical learning so that all children have the ability, confidence and desire to lead active, healthy lives.



# We Work on Two Fronts



We support schools in their current reality by serving as a hub for best practices, programs and resources to increase physical education and physical activity opportunities for students.



We create a better reality by driving education system and policy change that engages champions, influencers and decision makers to increase support for physical learning, thus enabling schools to educate the whole child.





## **Active Classrooms Week**

#ThisIsYourBrainOnMovement

DECEMBER 9-13, 2019

Active Classrooms Webinar Series (7) – Dec 2019-Feb 2020

[www.activeschoolsus.org/active-classrooms-webinars](http://www.activeschoolsus.org/active-classrooms-webinars)

Active Classrooms Grant Opportunities (8) – close 2/28/20

[www.activeschoolsus.org/active-classrooms-grants](http://www.activeschoolsus.org/active-classrooms-grants)



# Alief in Action

The Kinesthetic District Road Map





**HEALTHY**



**ACTIVE**



**KIDS**



**MAKE**



**BETTER**

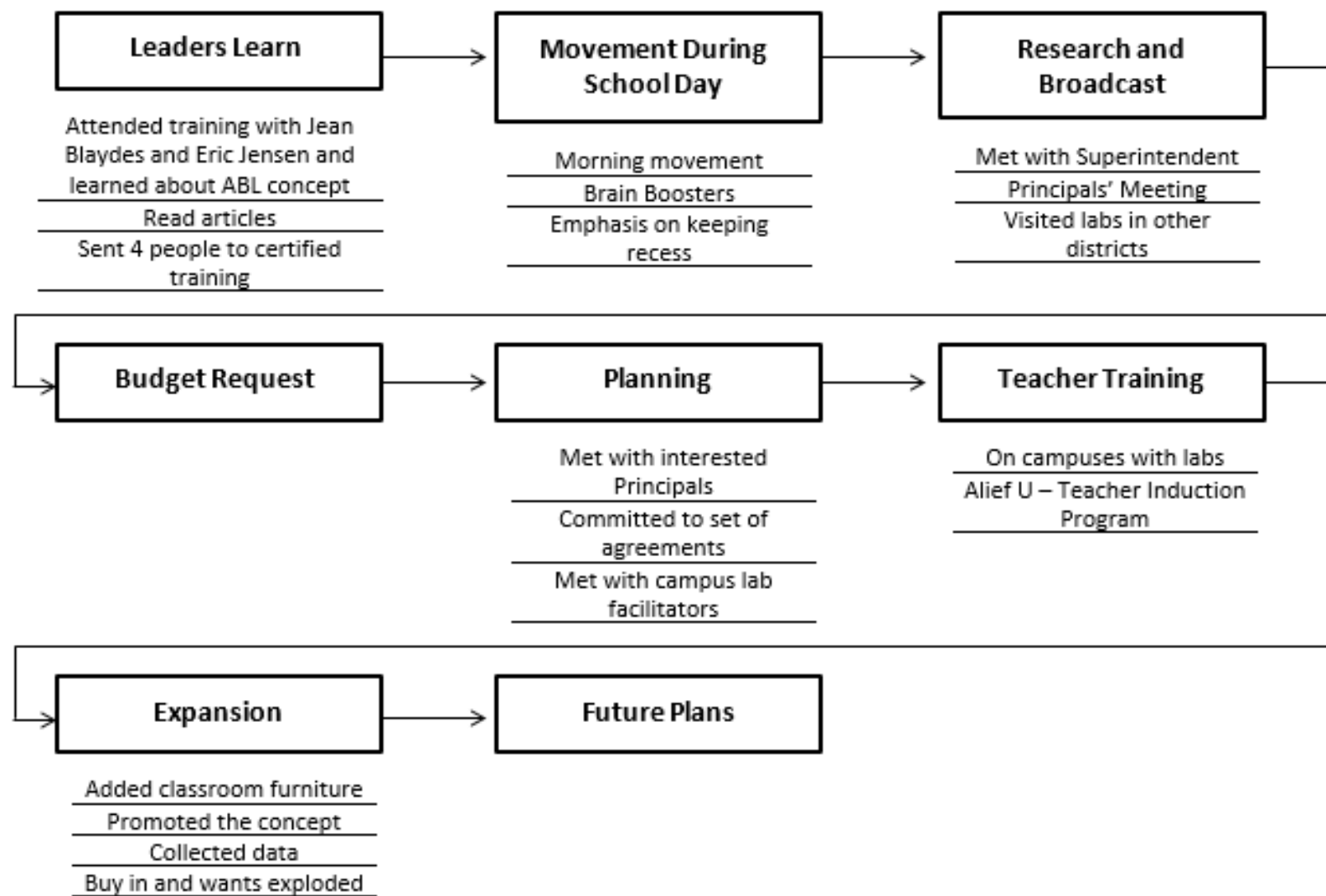


**LEARNERS!**

# This is Alief

- The district encompasses 36.6 square miles
- It was founded in 1917
- 46,000 plus student enrollment
- 46 campuses
- 86% of students on Free or Reduced Lunch
- Over 86 languages spoken in Alief community

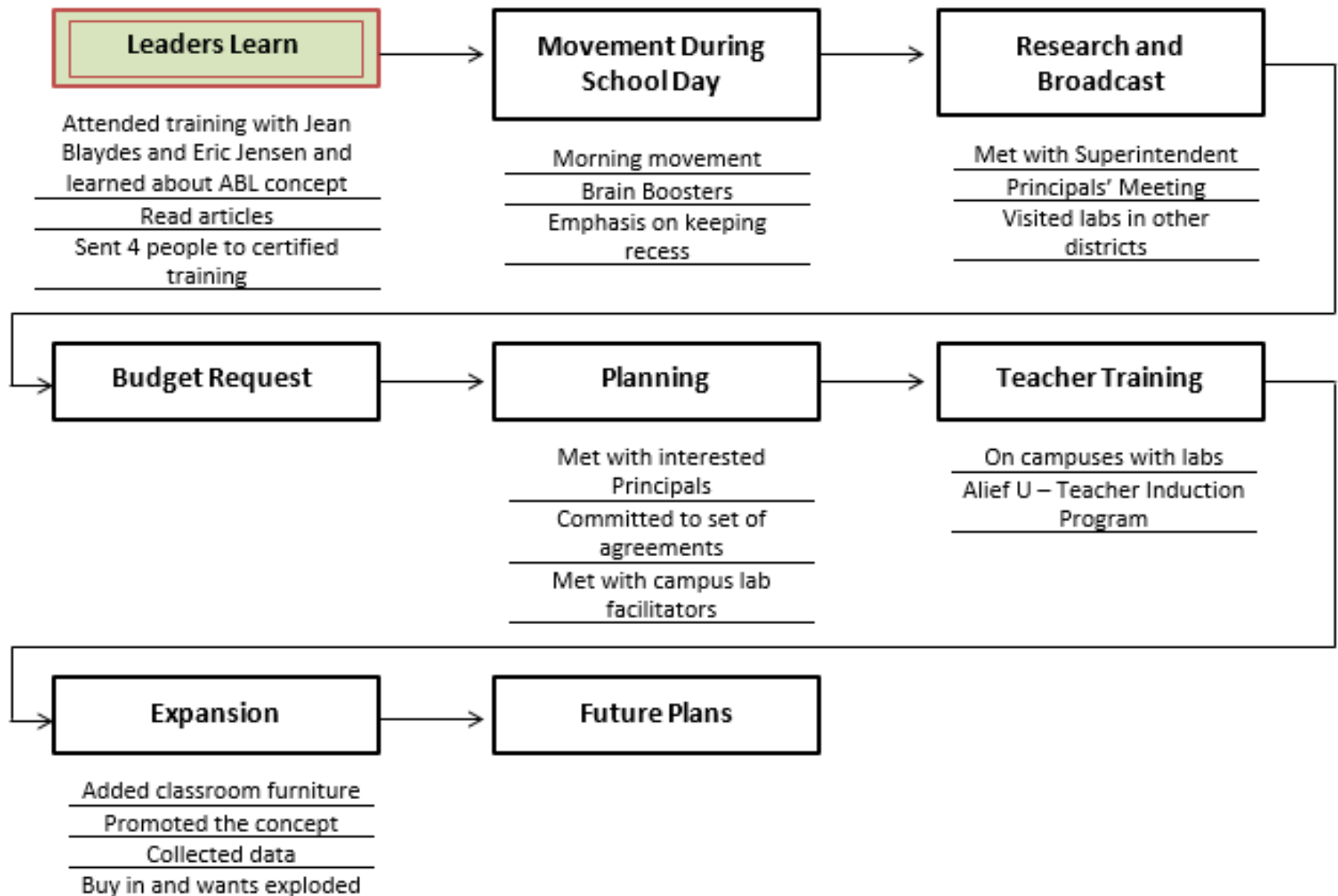
## Action Based Learning District Plan



# Patience is Key



# Action Based Learning District Plan



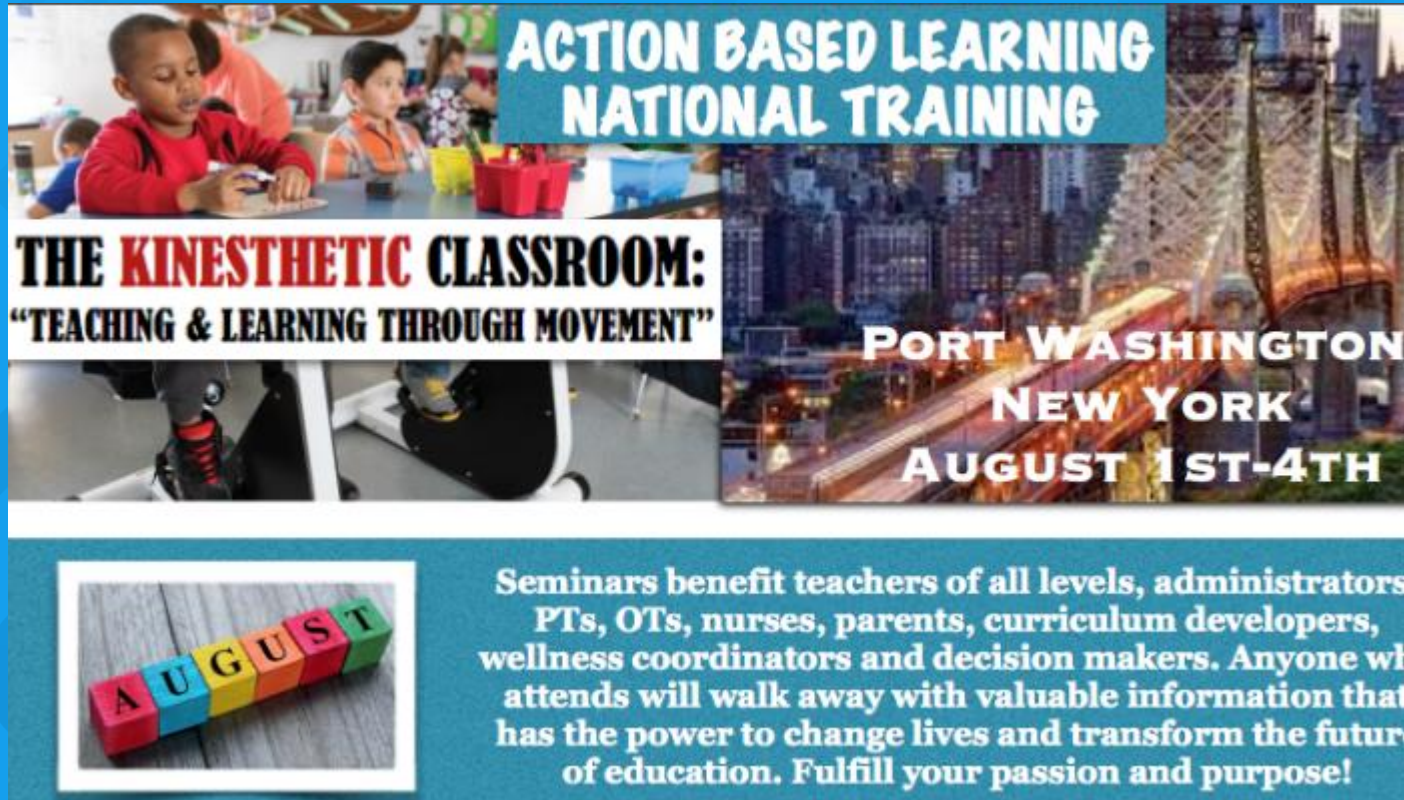
# Learning About the Concept





# ABL Master Trainers

## ABL Certified Trainers



**ACTION BASED LEARNING  
NATIONAL TRAINING**

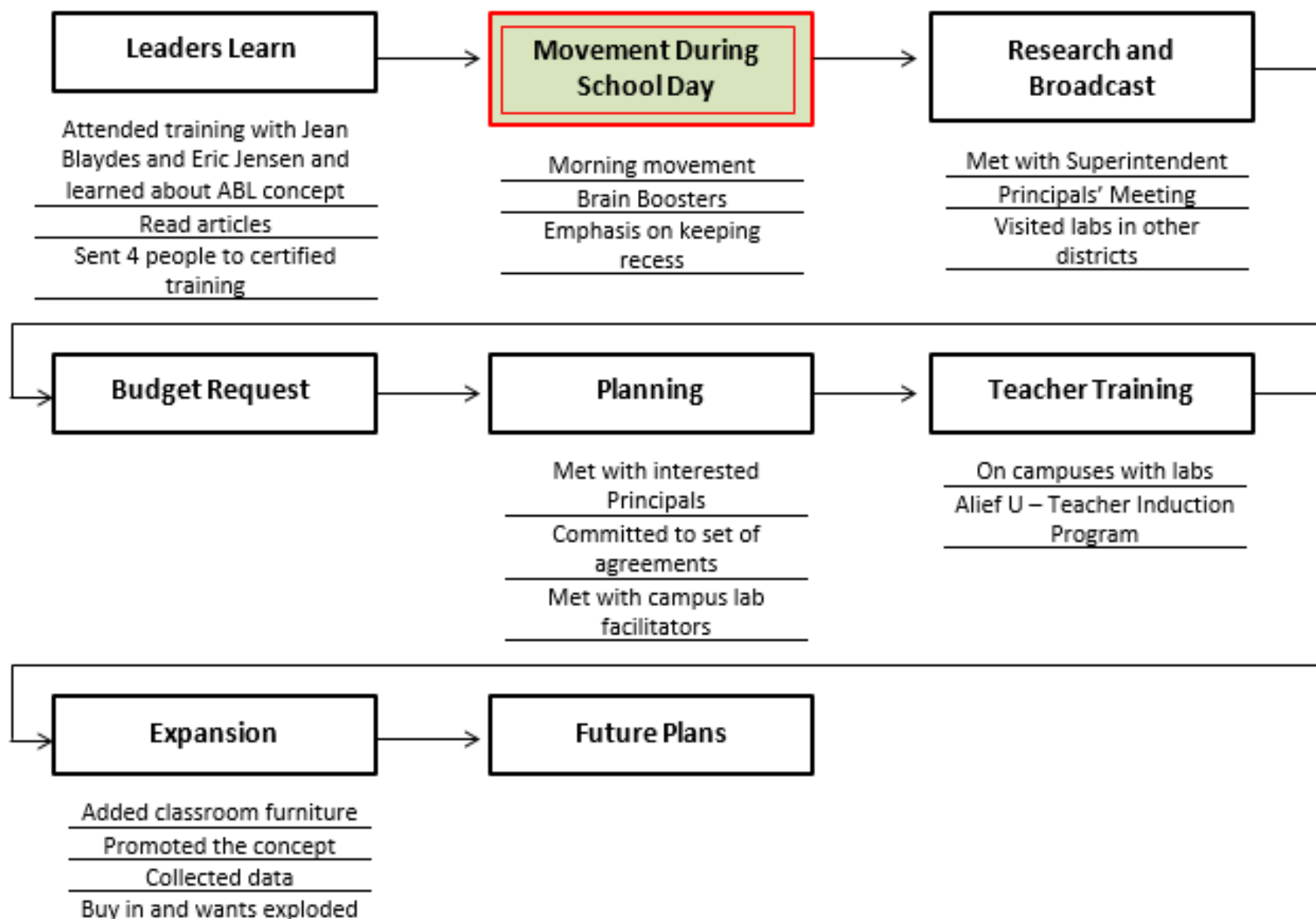
**THE KINESTHETIC CLASSROOM:  
"TEACHING & LEARNING THROUGH MOVEMENT"**

**PORT WASHINGTON  
NEW YORK  
AUGUST 1ST-4TH**

Seminars benefit teachers of all levels, administrators, PTs, OTs, nurses, parents, curriculum developers, wellness coordinators and decision makers. Anyone who attends will walk away with valuable information that has the power to change lives and transform the future of education. Fulfill your passion and purpose!



# Action Based Learning District Plan

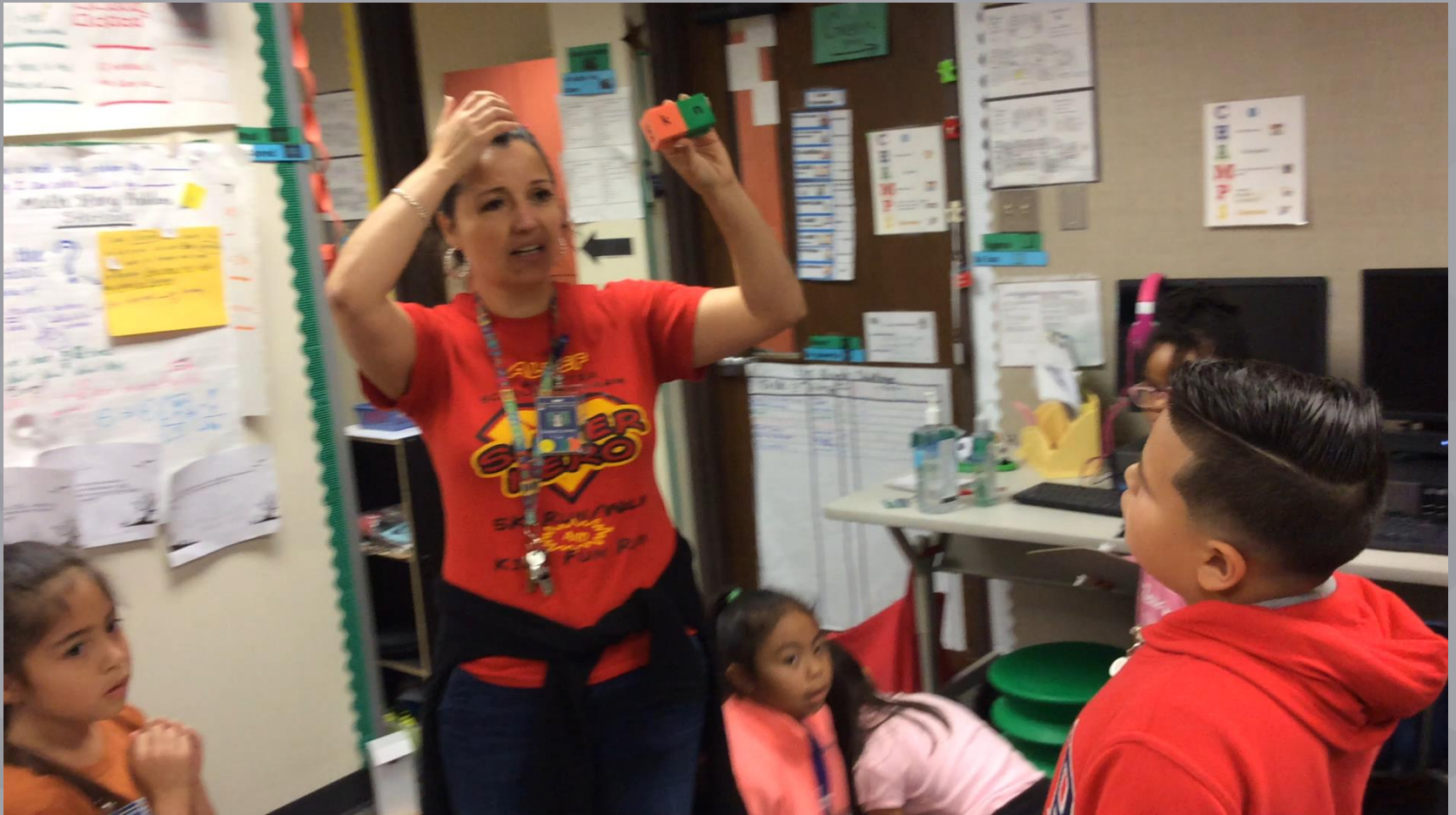


# Morning Activity Time

# Recess is Important

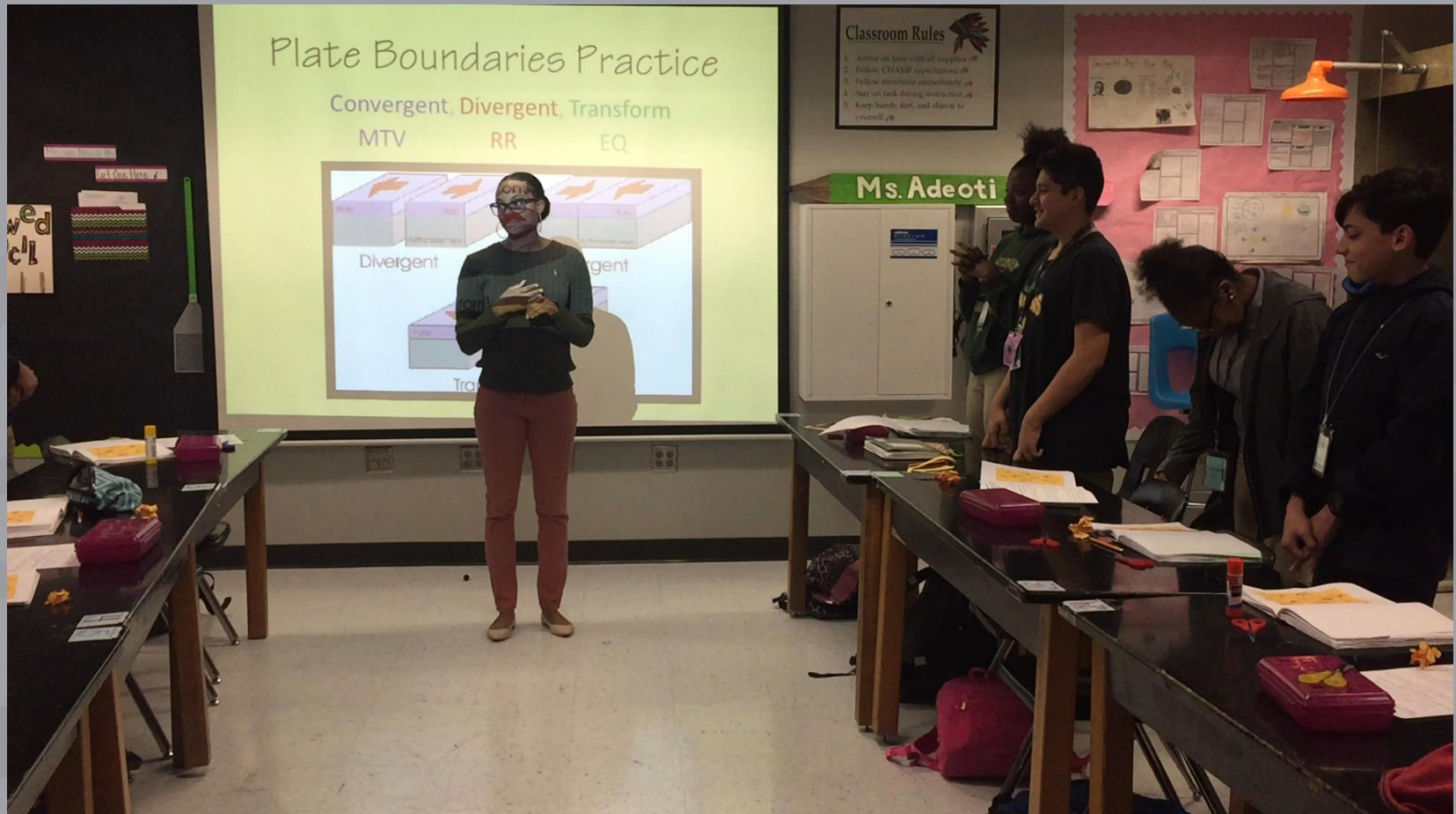


# Classroom Implementation: *Elementary*

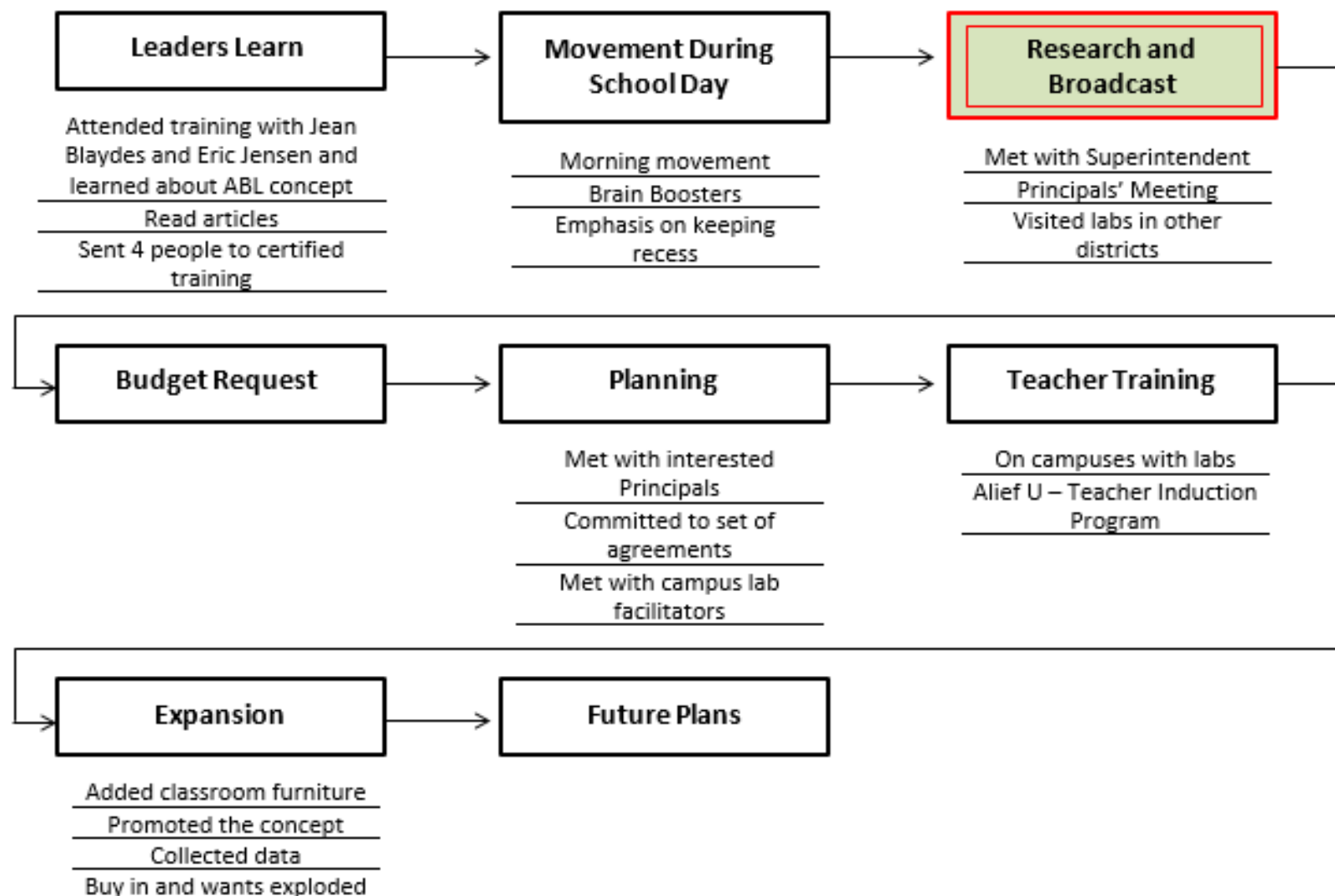




# Classroom Implementation: *Secondary*



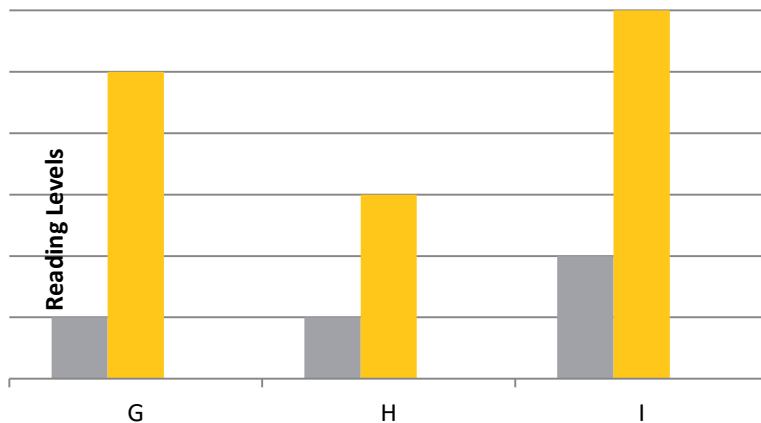
## Action Based Learning District Plan



# Visited Labs in Other Districts

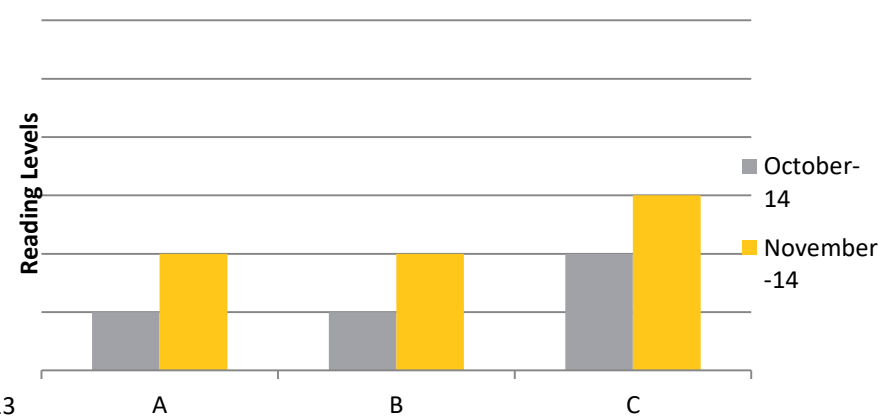


**Reading Group with Full ABL**



■ October-13  
■ November-13

**Reading Group with No ABL Supplement**





# Time on Principal Meeting Agenda

## Action Based Learning: Learning Through Movement

What Principals Should Know About the  
Power of Movement and Learning

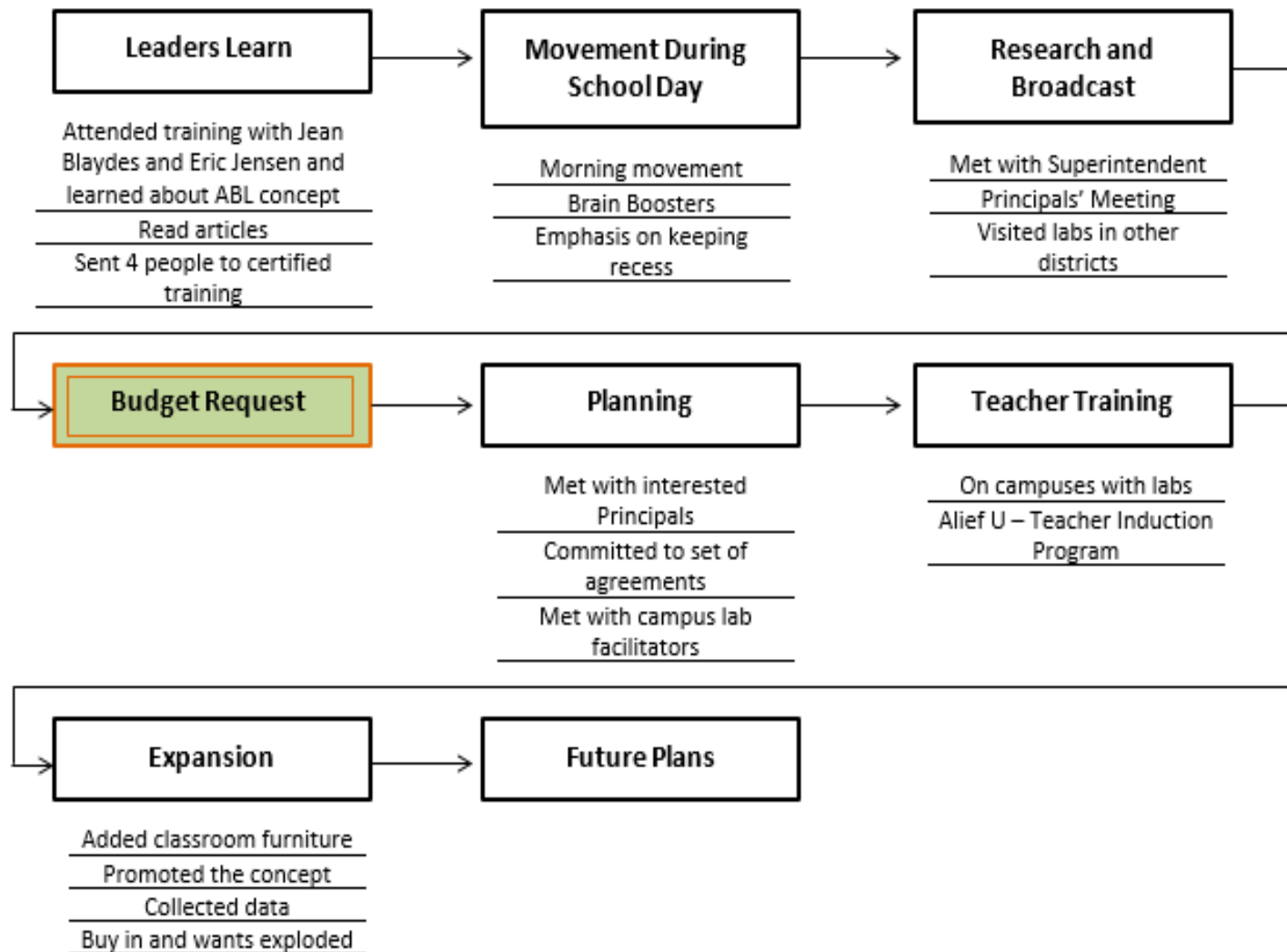




# Met with Superintendent

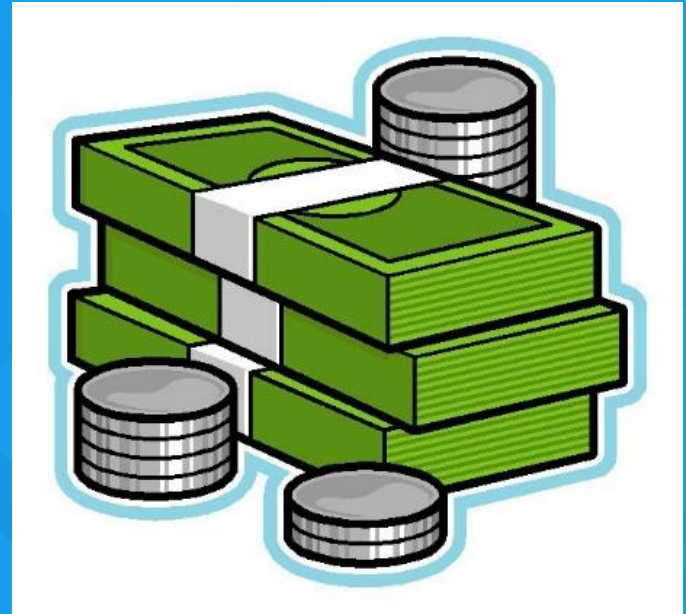


## Action Based Learning District Plan



# Request for Funds

- Pilot Program
- Start Small
- Planning Time
- Get Buy in



# Budget Notes

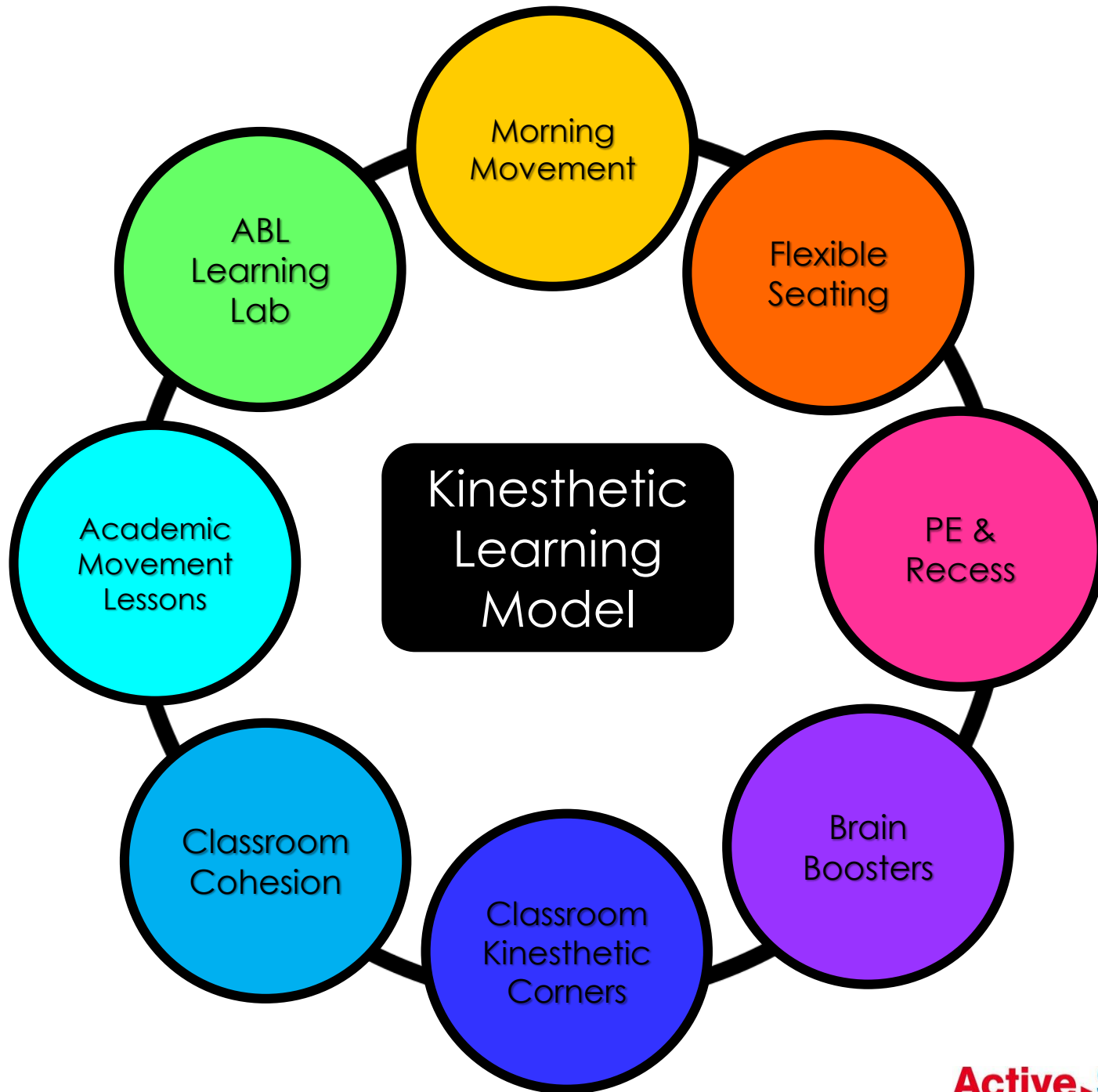
Determine how much (if any) you have

Set goals

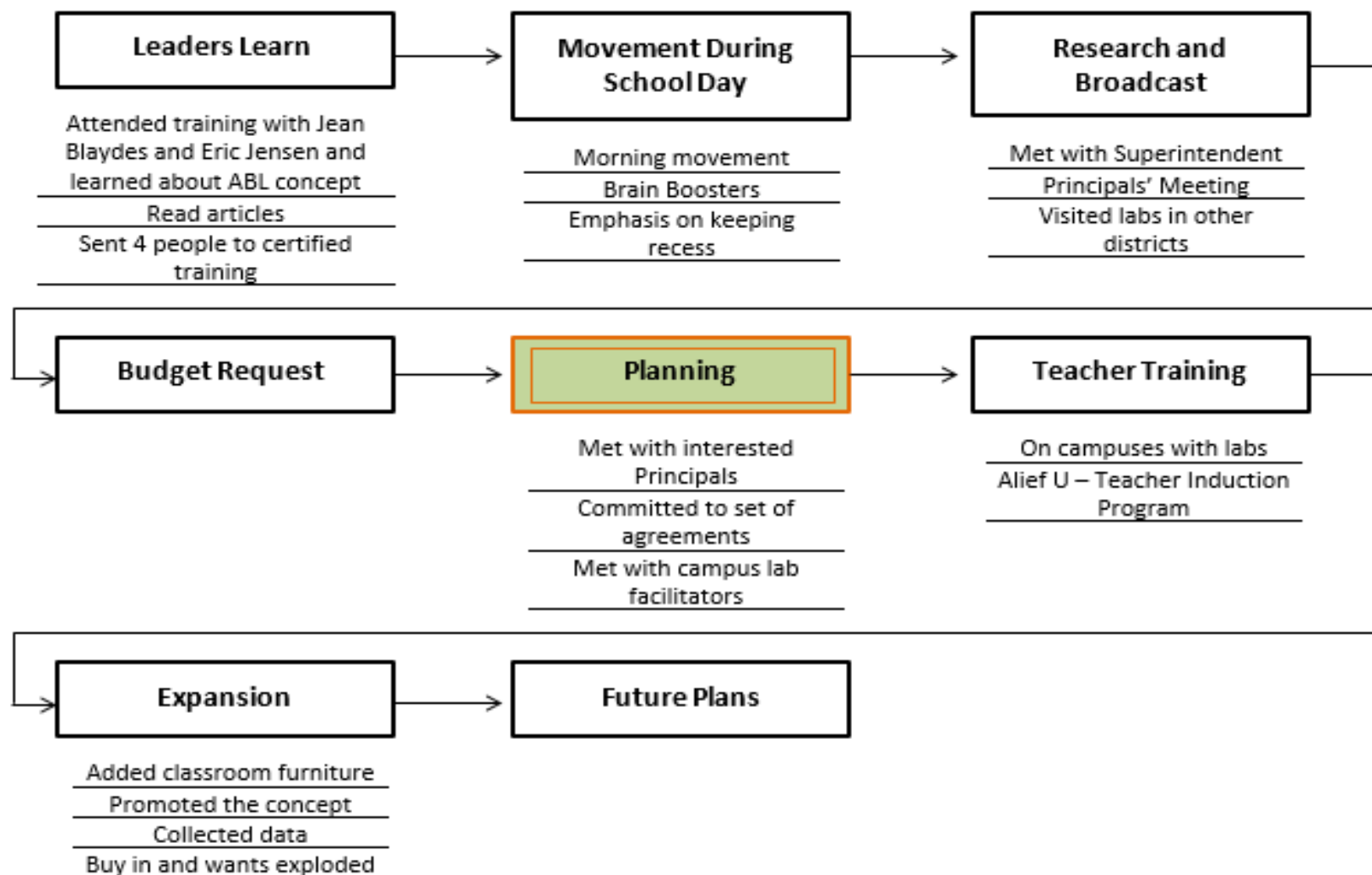
Find free or low cost items

**DON'T LET BUDGET CONCERNS STOP  
YOU!**





## Action Based Learning District Plan





# Met with Interested Principals



# Non-negotiables vs Flexibility

## Action Based Learning Campus Implementation Plan Year One

Initiate conversations about ABL with key campus staff including other administrators and leadership team members. Determine needs and goals of the campus.

Look at available space on a campus. Are labs appropriate or do we need to do in classroom labs/materials/furniture.

Determine where labs will be and who will be in charge.

(Alief data shows that there is increased implementation when an entire staff or content team is trained at the same time.)

Determine which groups will use the lab. Commit to 3 days per week for select groups and use the lab with fidelity. A minimum of 2 x per week is required for results. Not all classes have to come – start small.

Provide staff wide training on the benefits of action based learning and the expectations for use. Must ensure buy-in from leadership team and staff

Determine what data your campus will use for comparison.

- Offense data
- Attendance
- Sight words
- DCA, CCA
- Multiplication tables
- Other

Purchase necessary ABL materials and equipment

Provide training on lab procedures to teachers on the campus.

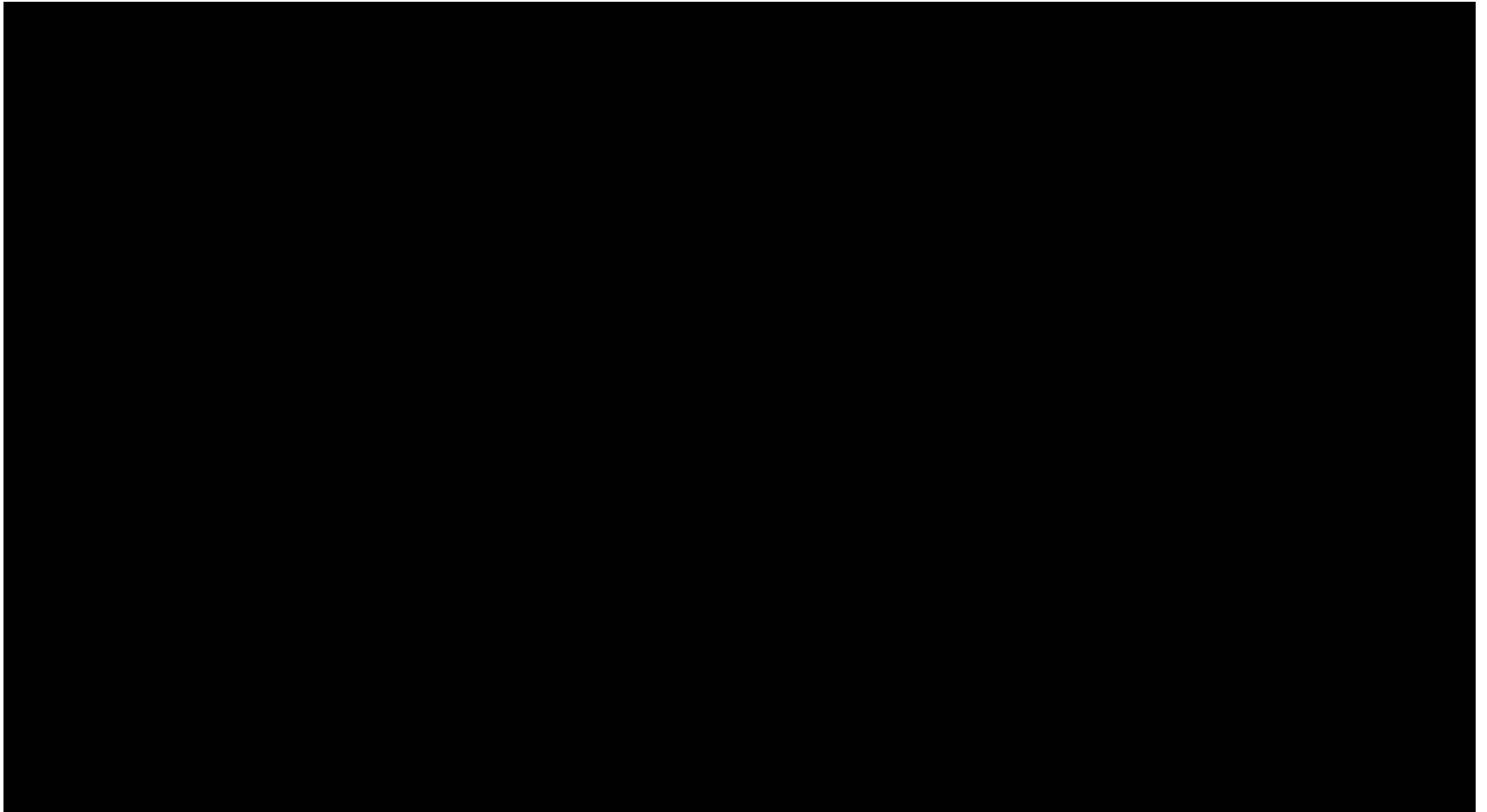
Campus sends in schedules so administrators can plan visits early in the year.

Teachers incorporate “Brain Boosters in classrooms on a regular basis.

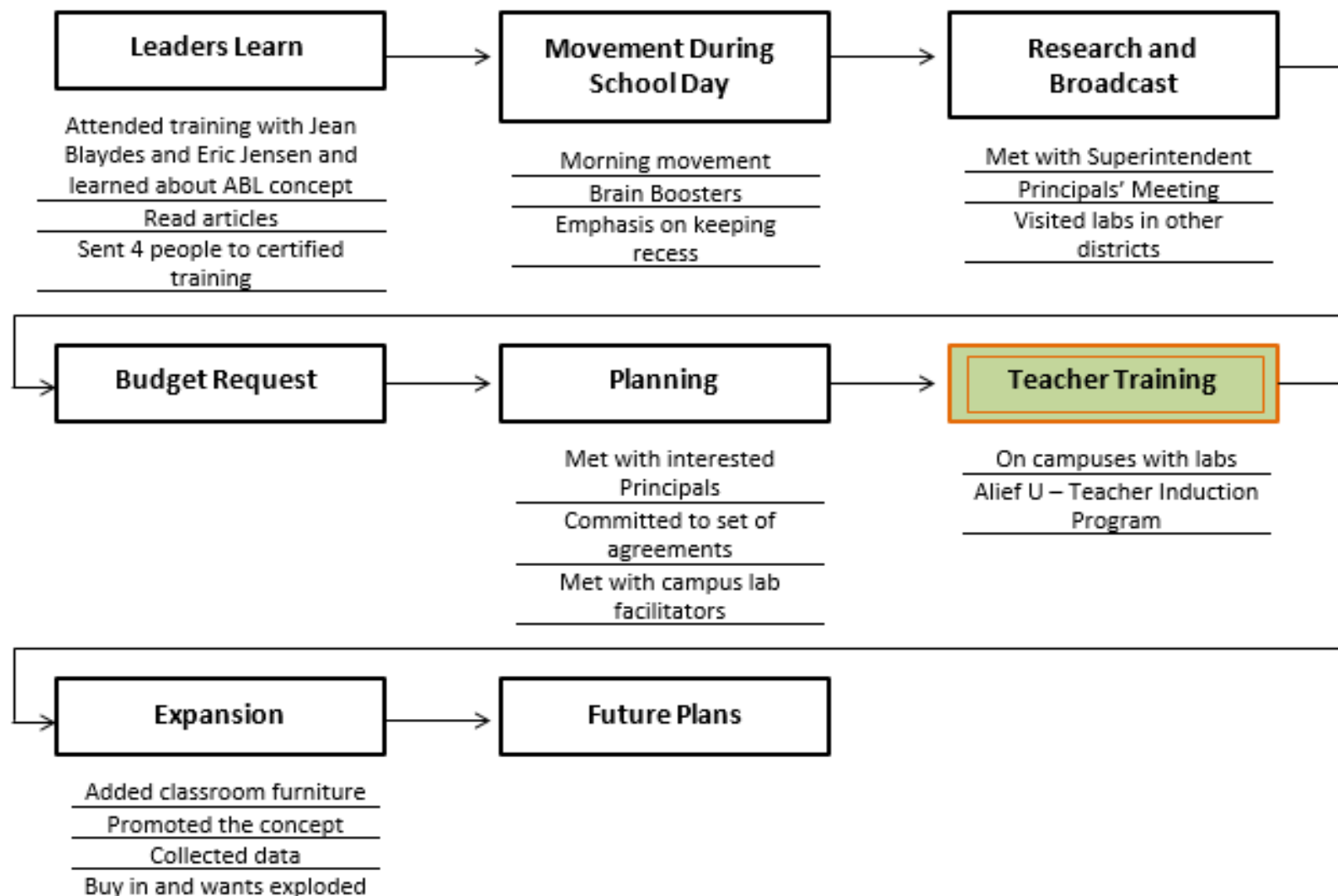
### Focused Follow-Up Sessions:

Incorporating academics in the lab  
Teaching using movement in the classroom  
Station variety in labs

# Met with Lab Facilitators for Implementation



## Action Based Learning District Plan



# Campus Teacher Training



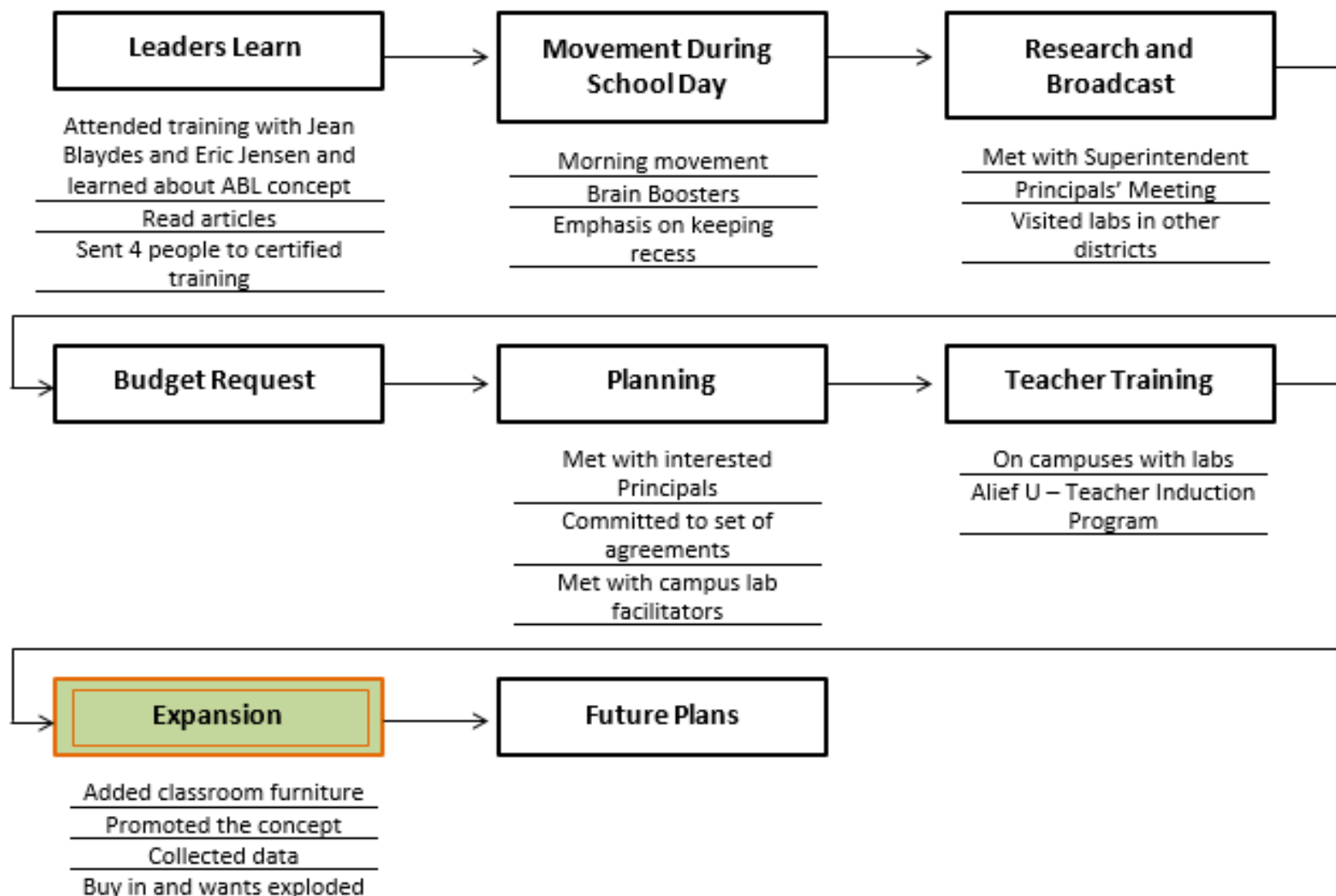
- This was a non-negotiable
- Teacher buy in crucial for success

# Teacher Induction Program

- Key to buy in and expansion
- 14 hours of required professional development for all teachers new to the district
- Have trained about 2400 teachers over the last 6years



## Action Based Learning District Plan





# Where are we Now?

- **35 labs on 22 campuses**
- **Kinesthetic furniture at all Secondary Campus Learning Centers**
- **Flexible Seating at most campuses**
- **Over 3000 staff trained on ABL**



# Designing New Learning Environments With New Seating Options



# Interventions



## What a Great Way to Start the School Day in the Library





# Full Day PK

- ABL time built in to the daily schedule
- Working on physical foundational skills – balance, spinning, crawling, coordination, etc...
- Adding academics this semester



# Key Points

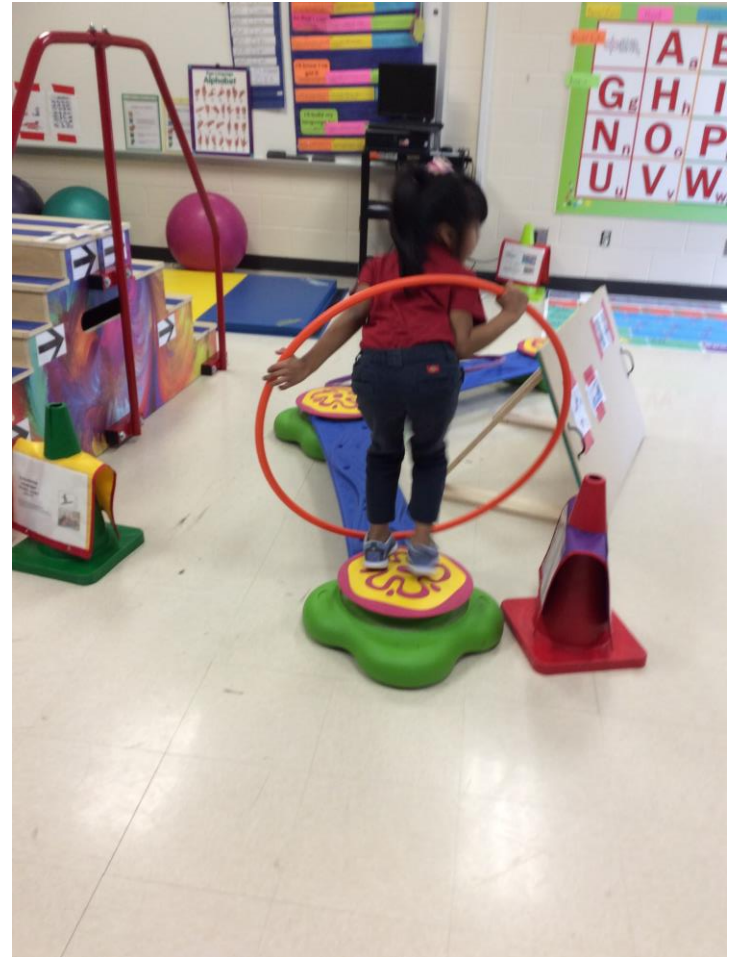
Patience is key!

Passionate ambassadors

Buy in from leaders

Creative budgeting

Teacher training!

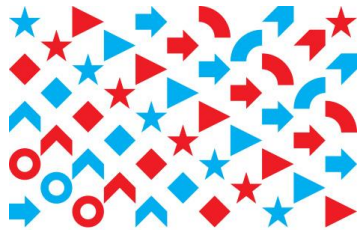






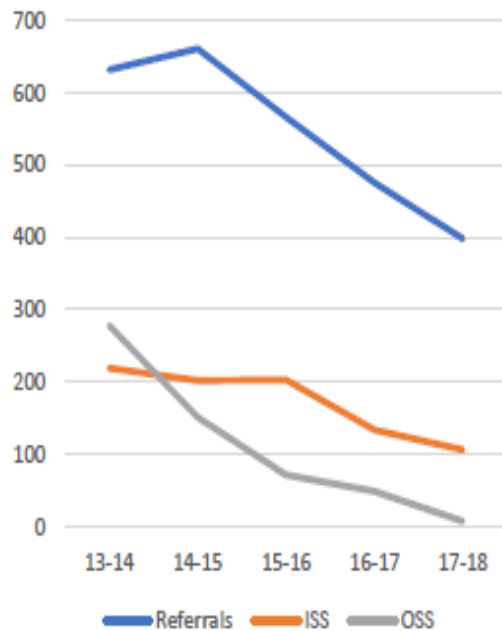
# Data



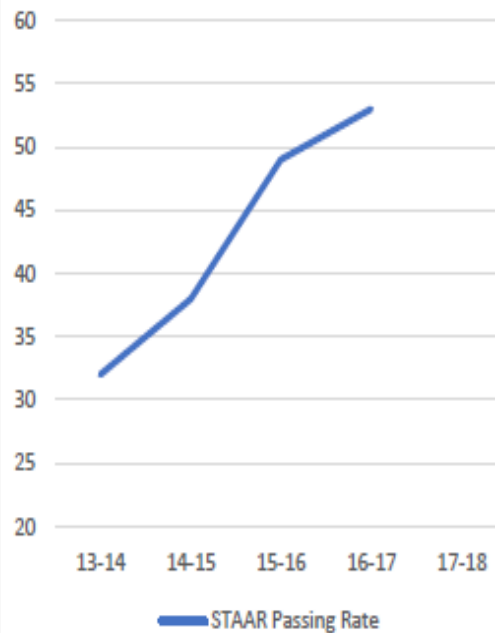


Active Schools

Discipline Trends

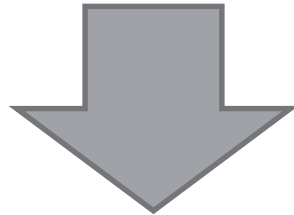


Student Achievement



# Heflin Elementary

Early Bird Action Based Learning  
group- office referrals on days  
students participated in Early Bird  
Group in ABL lab.



**75%**

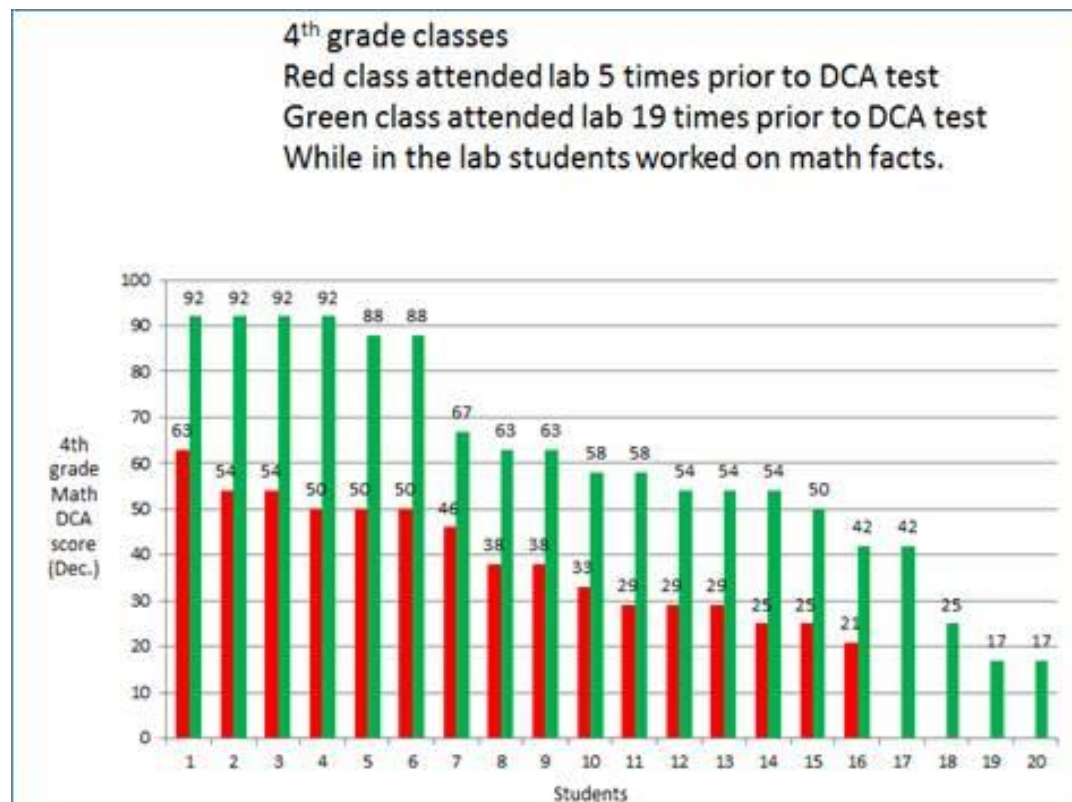


# Intervention Data

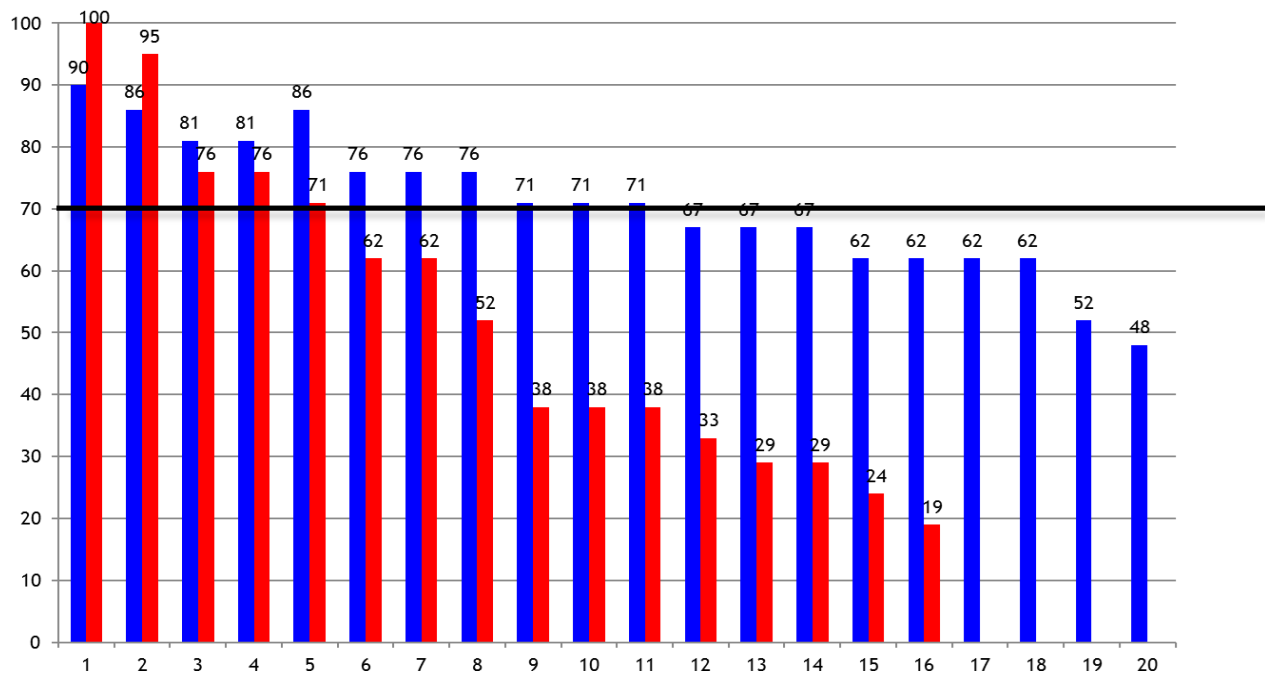
## Istation Results Maiorana 2018-2019

Name	Teacher	ENTRY	Oct	Nov	Dec	Jan	Feb	March	April	
Student	1	228	231	234	234	238	240	237	242	
Student	2	228	222	226	241	236	239	240	238	
Student	3	226	226	243	247	239	242	251	249	
Student	4	222	209	213	222	217	211	214	224	
Student	5	221	215	223	232	234	238	235	Moved	
Student	6	1736	1752	1872	1771	1834	1826	1833	1909	
Student	7	1711	1635	1693	1775	Moved				
Student	8	1688	1563	1567	1651	1800	1728	1778	1881	
Student	9	1663	1772	1726	1838	1857	1820	1791	1820	
Student	10	228	251	231	242	235	258	239	255	
Student	11	225	231	223	224	Moved				
Student	12	224	224	227	moved					
Student	13	223	218	230	234	234	234	240	232	
Student	14	1741	1770	1438	1548	1947	1978	Incomp	1910	
Student	15	1725	1826	1562	1706	1770	1849	1837	1834	
Student	16	1718	1802	1773	1810	1808	1892	1839	1863	
Student	17	1694	1592	1740	1695	1736	1718	1773	1808	
Student	18	215						234	228	
Student	19	218						234	230	
Student	20	1624						1769	1755	
Student	21	215						226	232	
Student	22	208						214	216	

# Elementary Data



# Martin Elementary Math Data



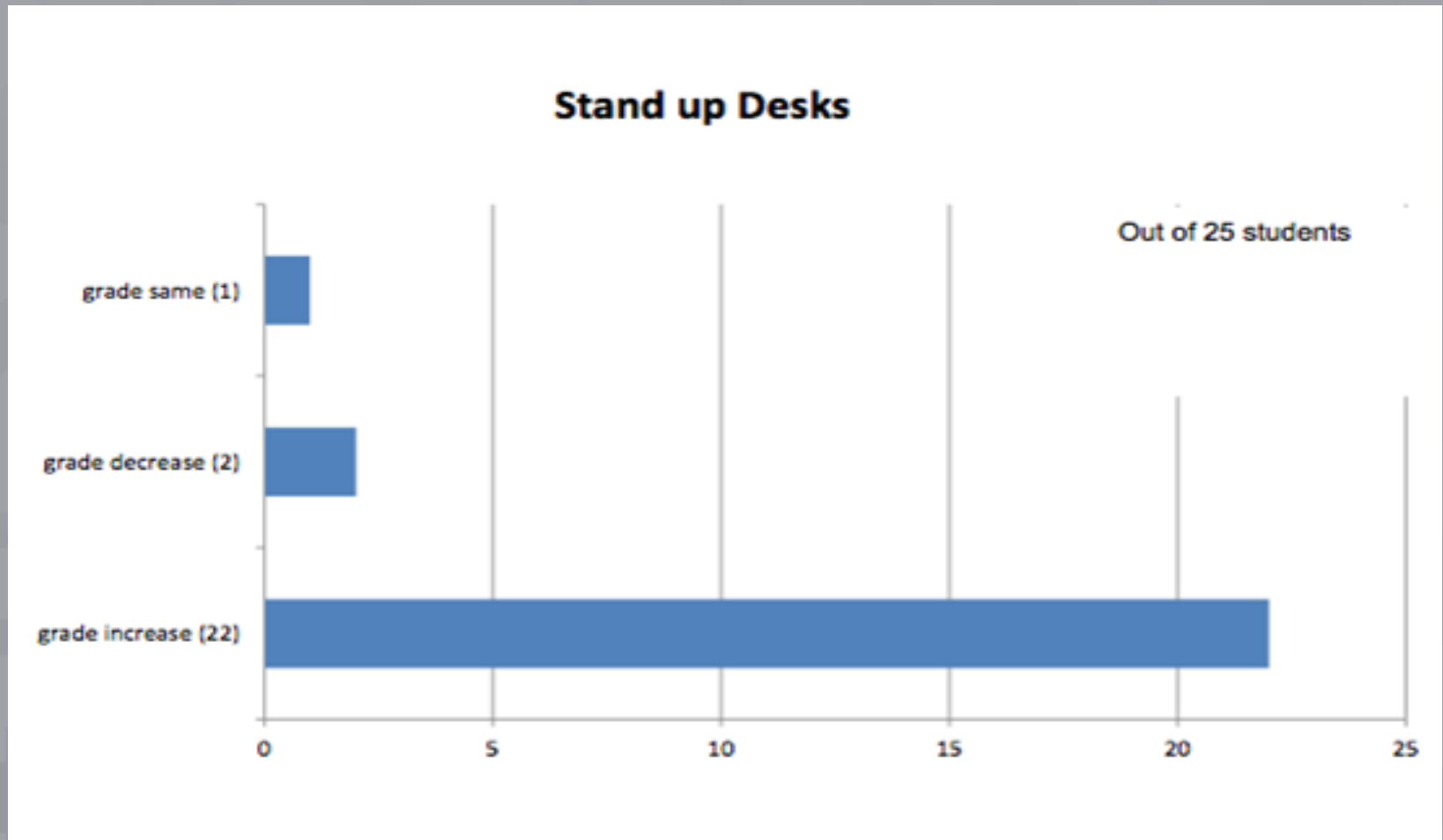
## December Math DCA - 2<sup>nd</sup> grade

**Blue Class** - teacher uses ABL as part of the daily routine including regular lab attendance.

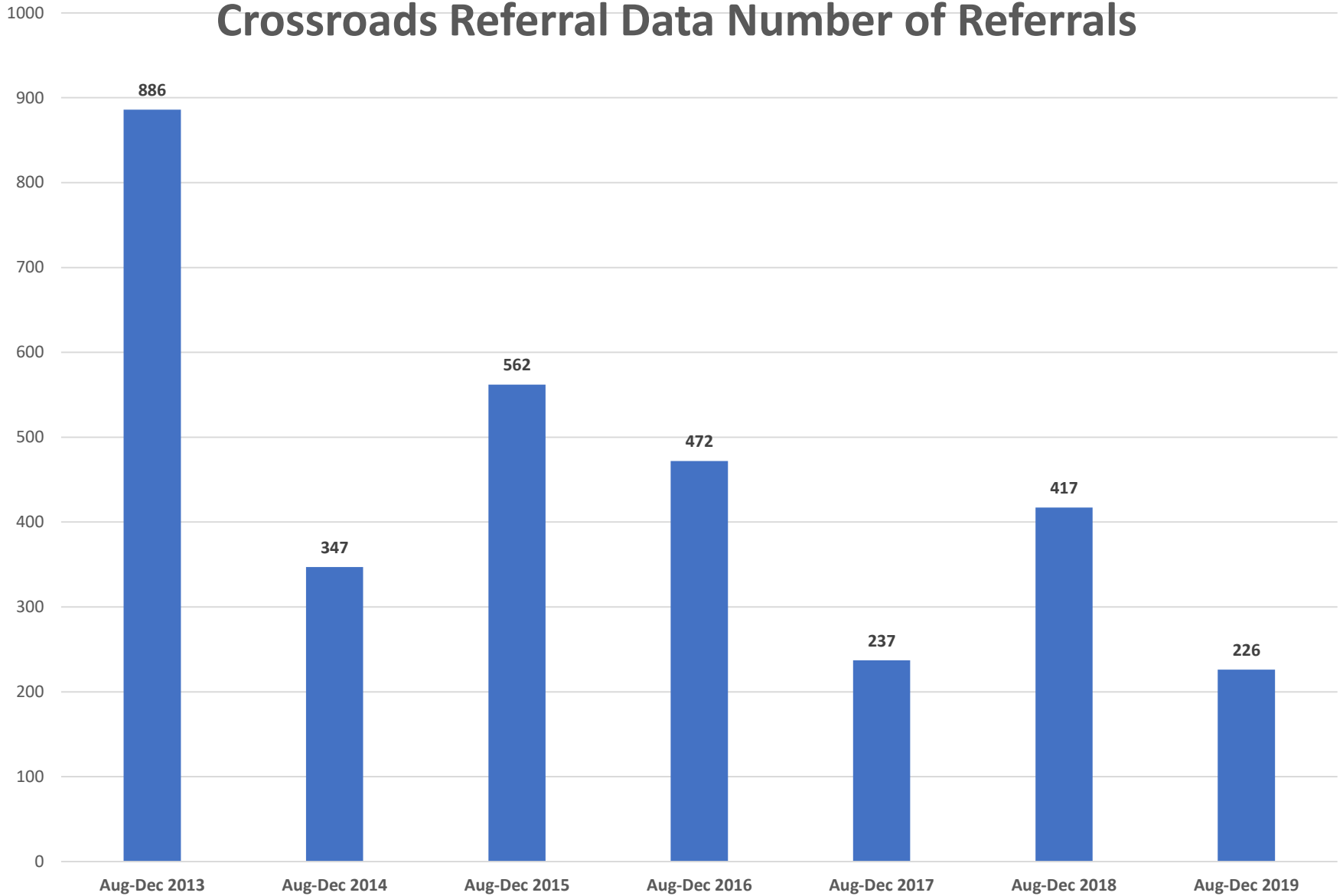
**Red Class** - minimal ABL is used within the daily routine & no regular lab attendance.



# Art Class Stand Up Desk Data



# Crossroads Referral Data Number of Referrals







**Thanks for joining District-Wide  
Commitment to Classroom Physical  
Activity and School Movement Labs:  
The Alief Independent School District Story**

**Kelley Sullivan  
Courtney Grass  
Cheryl Williams  
Leslie DeRuiter**

**UP NEXT: Exploring Social-Emotional Learning  
Through Movement: A Win-Win**

**Tuesday, February 11, 3-3:45pm ET /  
2-2:45pm CT / 1-1:45pm MT / 12-12:45pm PT**